



**UCL**

# Health Justice Partnerships

**Network for Justice  
Insights and Learning Session**

25<sup>th</sup> April 2023

A graphic of interlocking gears. One large gear is light blue and positioned on the left. To its right, a larger, partially visible gear is a darker teal color. Below these, a tan-colored gear is partially visible. The background is a solid teal color.

**Health Justice  
Partnership**

# Introduction

Professor Dame Hazel Genn

Dr Sarah Beardon



# What are Health Justice Partnerships?

A large teal oval containing white text. In the bottom left corner of the slide, there are three interlocking gears: one light blue and two white.

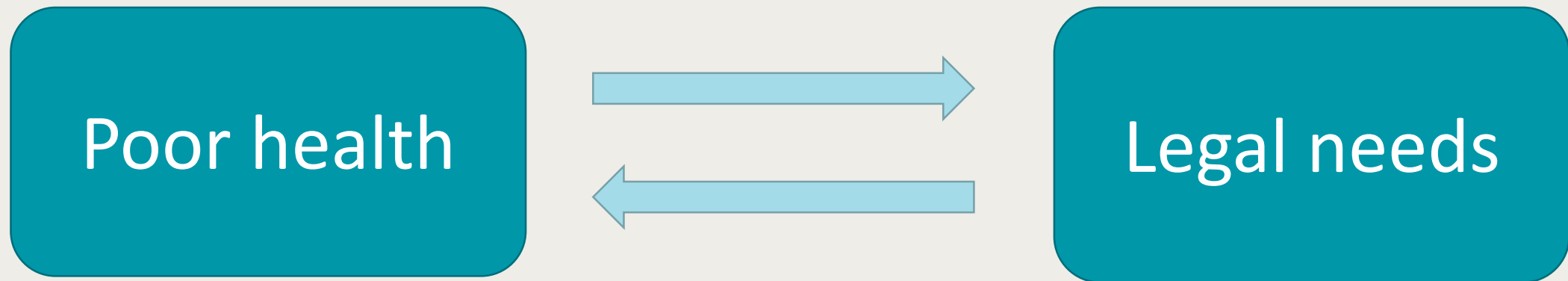
Collaborations between  
health services &  
organisations  
specialising in welfare  
rights

Provide advice and assistance on  
social welfare legal issues:

- Welfare benefits
- Debt
- Housing
- Employment
- Education
- Community care
- Immigration

# Why are Health Justice Partnerships needed?

Poor health can trigger problems for which the law provides solutions



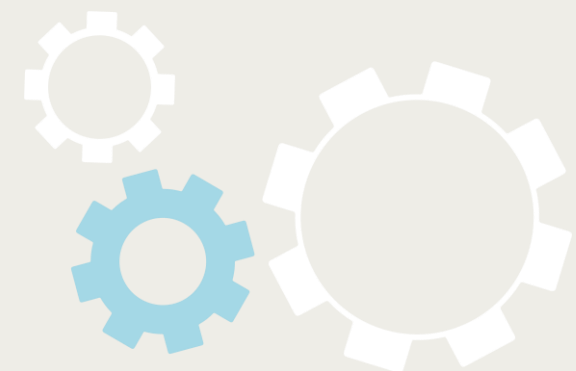
Legal needs reflect social and economic challenges that are harmful to health



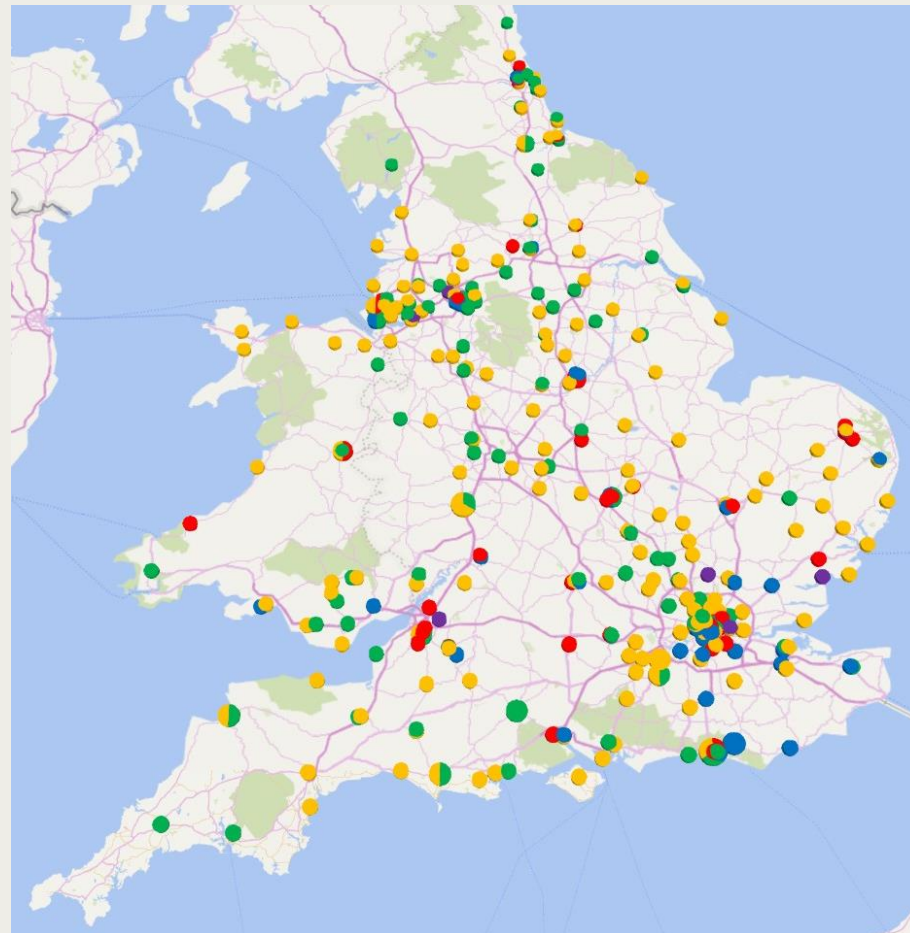
# What can Health Justice Partnerships achieve?



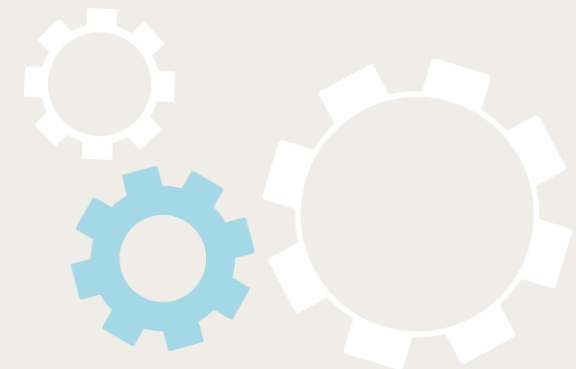
[SSPH+ | International Evidence on the Impact of Health-Justice Partnerships: A Systematic Scoping Review \(ssph-journal.org\)](https://ssph-journal.org)



# Service landscape in England and Wales



[The Health Justice Landscape in England and Wales | Centre for Access to Justice - UCL – University College London](#)



# A study of implementation success

Dr Sarah Beardon

Summary report:

[ucl\\_research\\_hjps\\_in\\_england\\_report\\_recommendations.pdf](#)

Doctoral thesis: Implementation of Health-Justice Partnerships:  
Integrating welfare rights advice services with patient care - UCL

Discovery

# Introduction

## Research Question:

‘How can health justice partnerships be implemented successfully?’

## Research Methods:

- Comparative Case Study with diverse partnerships (n=9)
- Interviews with professionals (frontline, management, funders)
- Qualitative analysis





# Case studies

## Health settings

Primary care  
Hospitals  
Mental health  
Mixed

## Legal advice

Casework services  
Single or multiple issues  
Commonly:  
benefits, debt,  
housing  
Face-to-face vs  
remote advice

## Geography

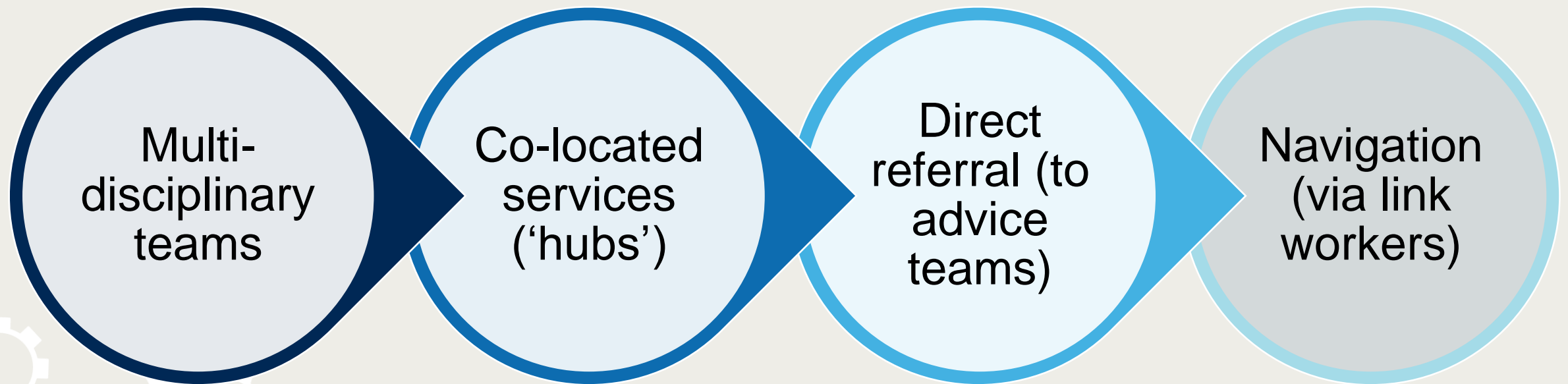
Single site  
Multi-site  
Region-wide

## Funding

Local authority  
NHS  
Charity  
University  
Joint



# Approaches to service integration



# Outcome 1: Collaborative working



# What did collaboration involve?

Identifying  
needs

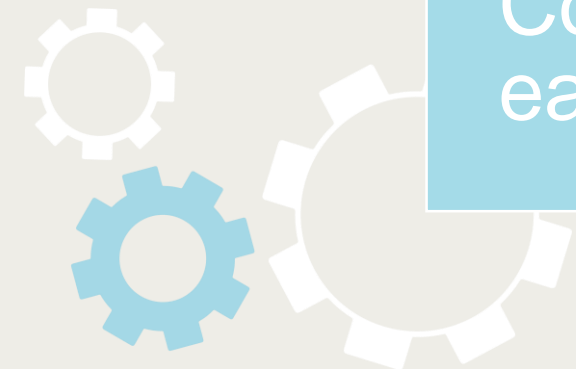
Making  
referrals

Exchanging  
information

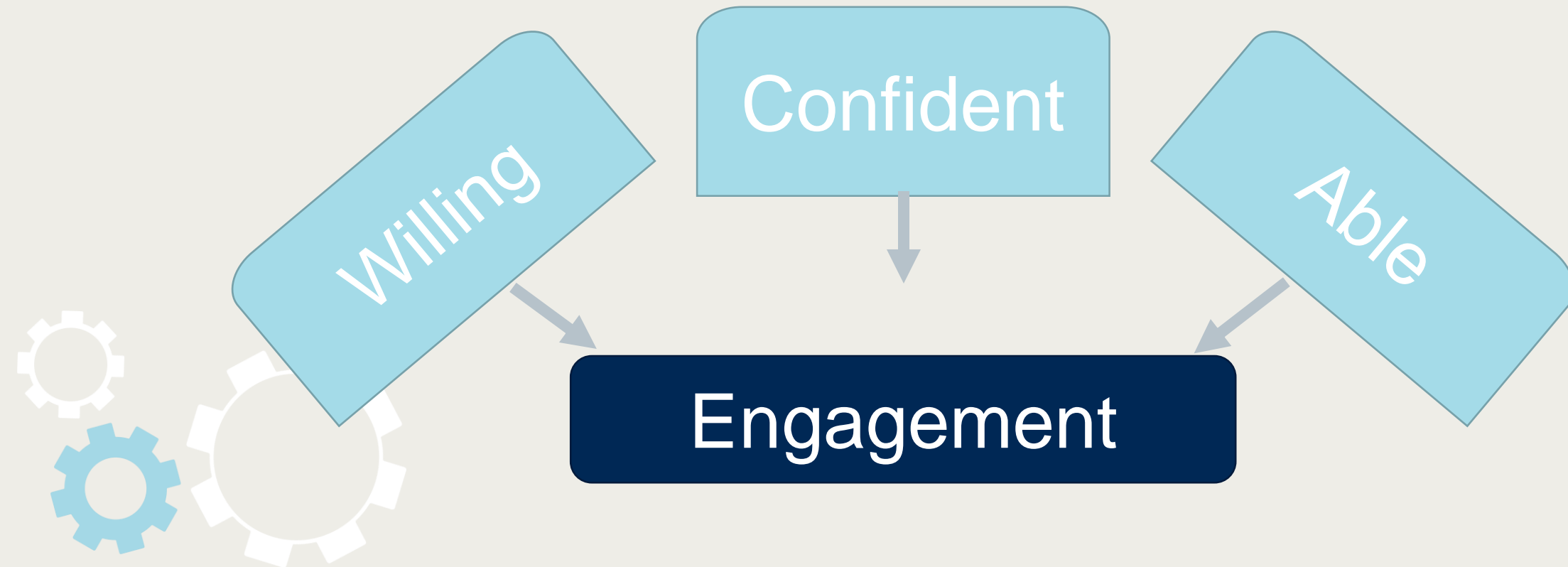
Consulting  
each other

Making joint  
contributions

Providing  
feedback



# Why did some teams work more closely together?



# Why did some teams work more closely together?

Sentiments  
Perceived value  
Sense of purpose

Willing

Confident

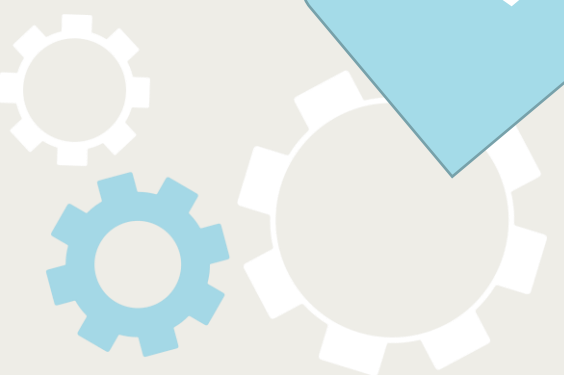
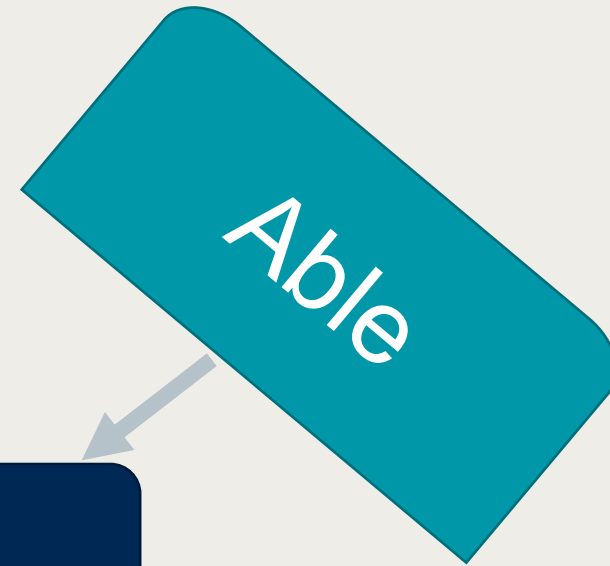
Able

Engagement



# Why did some teams work more closely together?

Knowledge  
Workability  
Interaction opportunities



# Why did some teams work more closely together?

Relationships  
Trust  
Habits / norms





# Maximizing impact through collaborative working

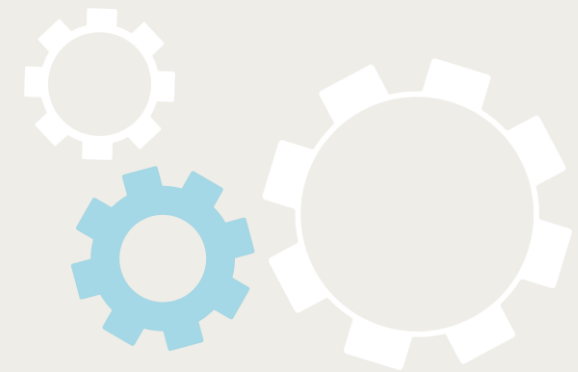
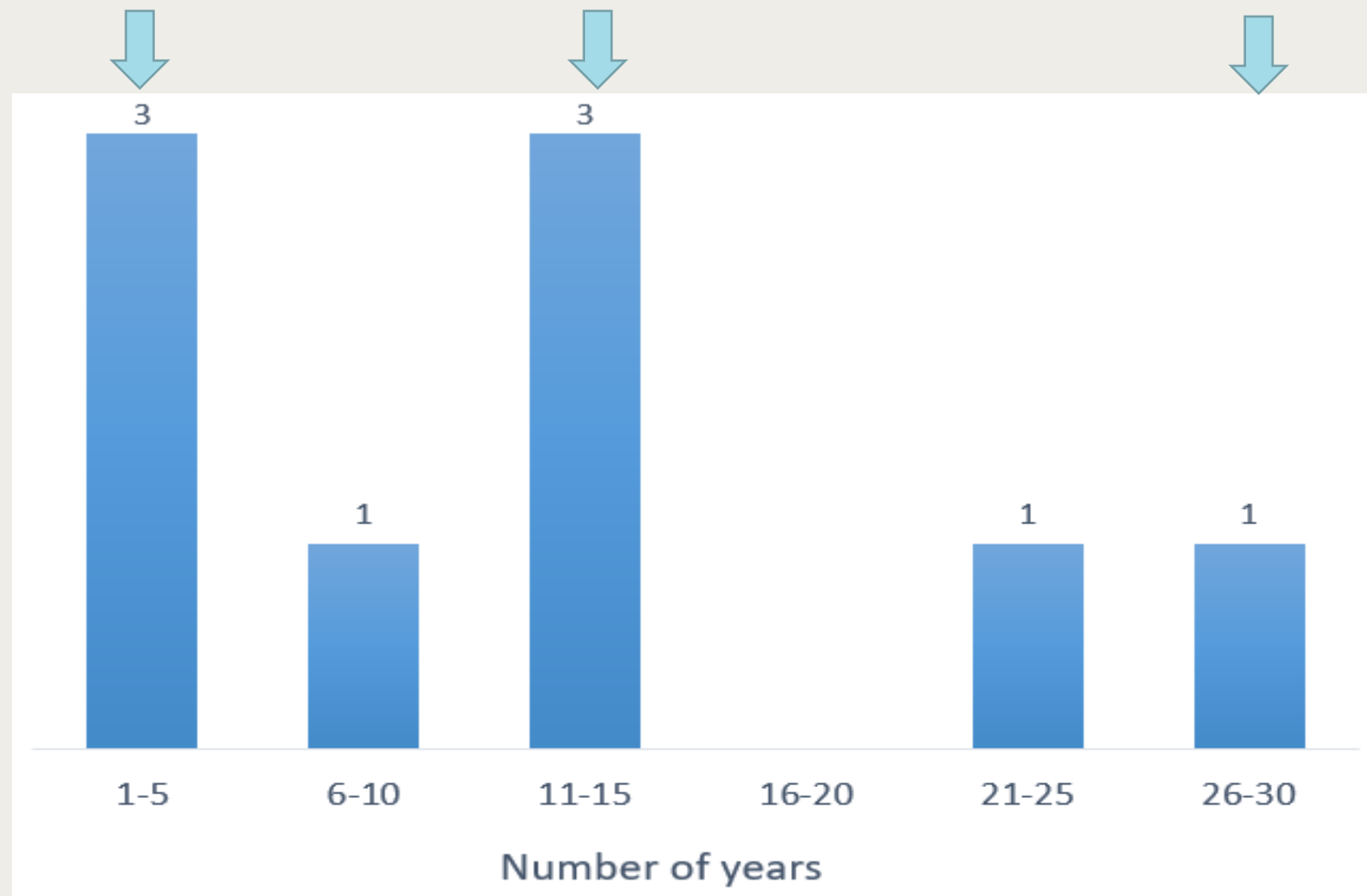
Partnership aim	Low level of engagement in inter-professional teamwork	High level of engagement in inter-professional teamwork
<b>Facilitating timely access to advice for people with legal needs</b>	Patients may find their own way to the service by asking for help or seeing it advertised in the healthcare location.	Patients will access the service more promptly and consistently if they are proactively asked about their needs.
<b>Providing high quality advice and assistance to resolve welfare rights issues</b>	Welfare rights advisers can achieve much when working with clients alone. However, sometimes medical evidence is needed to support the casework.	Welfare rights advisers can more easily obtain critical medical evidence, improving the success rates of welfare claims.
<b>Providing seamless support and a positive patient experience</b>	Patients appreciate that advice is available at a time of need, and feel comfortable accessing a trusted healthcare-based service.	Support is more seamless for the patient, with staff members fully informed about their circumstances and providing continuity of care.
<b>Improving the health service's capacity to respond to health inequality</b>	The advice service is on hand to receive referrals when healthcare professionals identify welfare issues among patients.	Healthcare teams become better informed about welfare issues and patient circumstances, supporting the way they work with individuals.



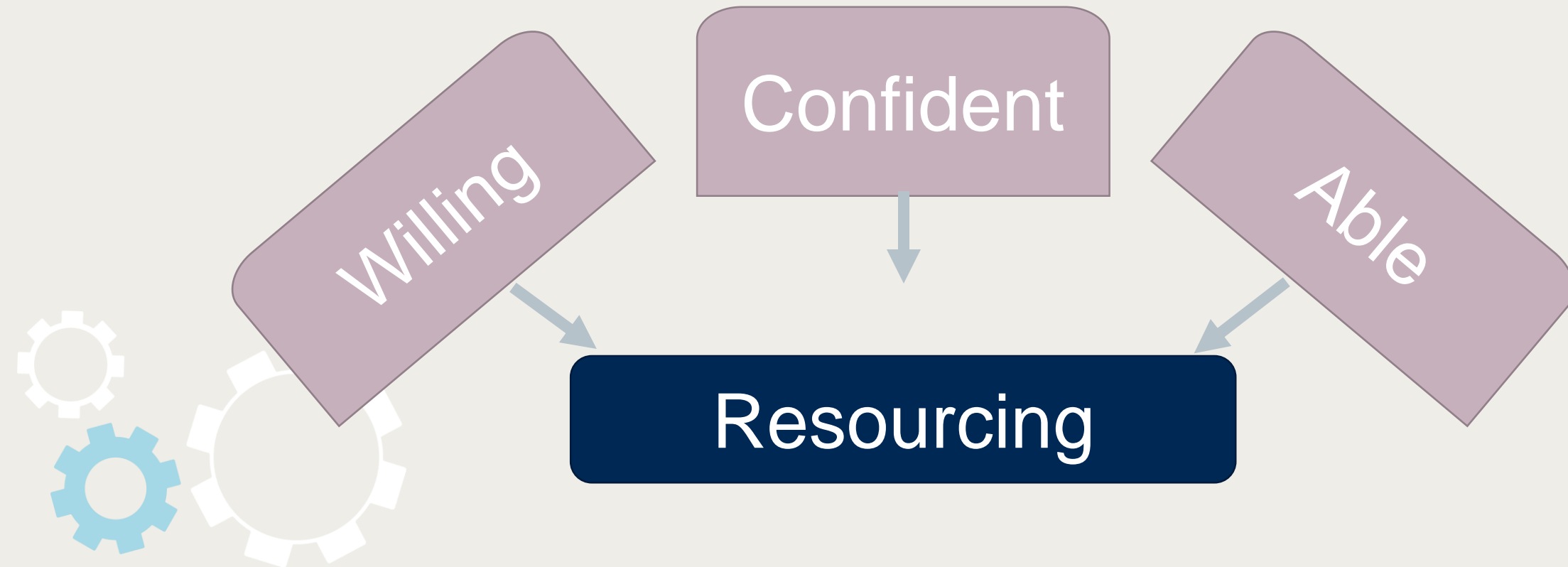
# Outcome 2: Sustainability



# Lifespan of the partnerships



# What influenced resourcing decisions?



# What influenced resourcing decisions?

Alignment with strategic goals  
Value for money judgements  
Personal views / sentiments

Willing

Confident

Able

Resourcing



# What influenced resourcing decisions?

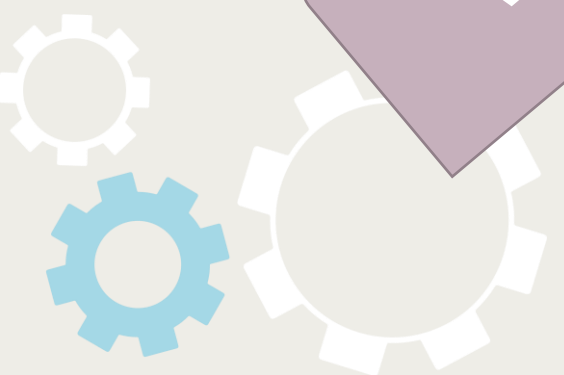
Sufficient funds  
Sufficient material resources  
Support in kind

Willing

Confident

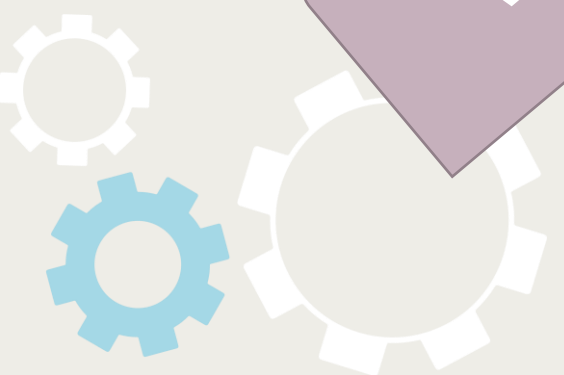
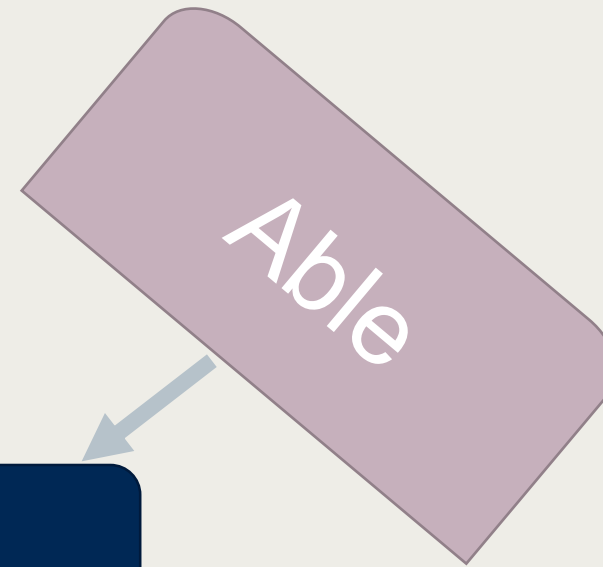
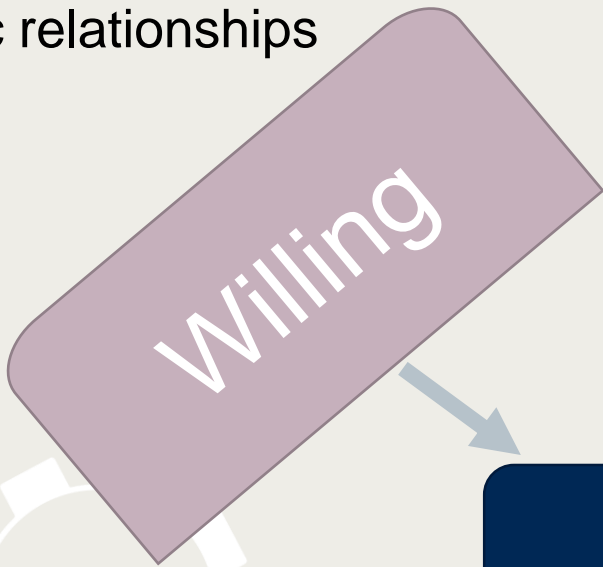
Able

Resourcing



# What influenced resourcing decisions?

Evaluation evidence  
Local reputation  
Strategic relationships



# Conclusions





# Take-aways

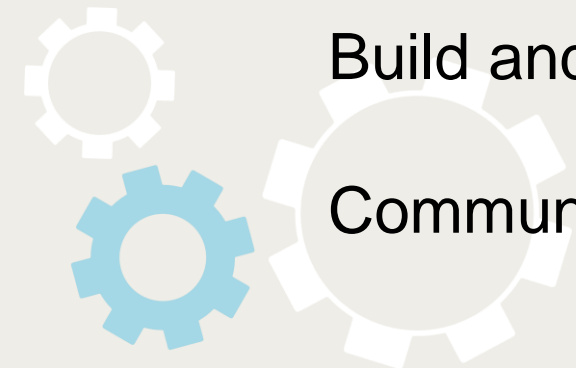
No one-size-fits-all approach (differ in scale, focus, resources, partners & setting)

Should be responsive to local needs and context

Aim for good levels of collaboration and engagement

Build and maintain relationships to strengthen the partnership

Communicate the benefits



# New implementation guide



Aims to provide a starting point  
& support development of  
health justice partnerships

Out for consultation

[hjp\\_implementation\\_guide\\_digital.pdf \(ucl.ac.uk\)](https://ucl.ac.uk/hjp_implementation_guide_digital.pdf)

# Thank you

Website: <https://www.ucl.ac.uk/health-of-public/health-justice-partnerships>

Email: [health-justice@ucl.ac.uk](mailto:health-justice@ucl.ac.uk)

Twitter: [@HealthJusticeUK](https://twitter.com/HealthJusticeUK)

